

TRIM SIZE MATRIX

Note: Blank white cells indicate non-standard sizes that may be available through Custom Trim

Product and Paper Types		B&W				Color		Premium Color	
		38lb/48gsm Groundwood	50lb/74gsm Creme	50lb/74gsm White	70lb/104gsm White	50lb/74gsm White	70lb/104gsm White	70lb/104gsm White	
Page Range		18-900 pgs (PF) 18-840 pgs (HC)	18-1050 pgs	18-1200 pgs	18-900 pgs (PF) 18-840 pgs (HC)	18-1200 pgs	18-900 pgs (PF) 18-840 pgs (HC)	18-900 pgs(PF) 18-840 pgs(HC)	
TRIM SIZES		Bindtype	<input type="checkbox"/> B&W Available				<input type="checkbox"/> Color Available		<input type="checkbox"/> Premium Color Available
inches	mm								
4 x 6	152 x 102	Perfectbound							
4 x 7	178 x 102	Perfectbound							
4.25 x 7	178 x 108	Perfectbound							
4.37 x 7	178 x 111	Perfectbound							
4.72 x 7.48	190 x 120	Perfectbound							
5 x 7	178 x 127	Perfectbound							
5 x 8	203 x 127	Perfectbound							
		Case Laminate							
		Digital Cloth™ Cover (Blue/Gray)							
		Jacketed Cover							
5.06 x 7.81	198 x 129	Perfectbound							
5.25 x 8	203 x 133	Perfectbound							
5.5 x 7.5	191 x 140	Perfectbound							
5.5 x 8.25	210 x 140	Perfectbound							
5.5 x 8.38	213 x 140	Perfectbound							
5.5 X 8.5 (Demy 8vo)	216 X 140	Perfectbound							
		Case Laminate							
		Digital Cloth™ Cover (Blue/Gray)							
		Jacketed Cover							
5.83 x 8.27 (A5)	210 X 148	Perfectbound							
		Case Laminate							
6 x 9	229 x 152	Perfectbound							
		Case Laminate							
		Digital Cloth™ Cover (Blue/Gray)							
		Jacketed Cover							
6.14 x 9.21 (Royal 8vo)	234 x 156	Perfectbound							
		Case Laminate							
		Digital Cloth™ Cover (Blue/Gray)							
		Jacketed Cover							
6.5 x 6.5	165 x 165	Perfectbound							
6.625 x 10.25	260 x 168	Perfectbound							
6.69 x 9.61 (pinched crown)	244 x 170	Perfectbound							
		Case Laminate							
7 x 10	254 x 178	Perfectbound							
		Case Laminate							
7.44 x 9.69 (crown 4vo)	246 x 189	Perfectbound							
7.50 x 9.25	235 x 191	Perfectbound							
		Case Laminate							
8 x 8	203 x 203	Perfectbound							
		Case Laminate							
8 x 10	254 x 203	Perfectbound							
		Case Laminate							
8 x 10.88	276 x 203	Perfectbound							
		Case Laminate							
8.25 x 10.75	273 x 210	Perfectbound							
		Case Laminate							
8.25 x 11	280 x 210	Perfectbound							
8.268 x 11.693 (A4)	297 x 210	Perfectbound							
8.5 x 8.5	216 x 216	Perfectbound							
		Case Laminate							
8.5 x 9	229 x 216	Perfectbound							
8.5 x 11	280 x 216	Perfectbound							
		Case Laminate							
11 x 8.5	216 x 280	Perfectbound						Max 400 pages	
		Case Laminate						Max 400 pages	

GLOSS or MATTE lamination

DUPLEX COVERS: Perfect bound titles can be printed 4-color duplex (two-sided) covers. 11" x 8.5" is not available for Duplex Printing.

PERFORATION: Perforation of interior pages is available for Color 50 perfect bound products in limited sizes (US Only):
6" x 9", 7" x 10", 7.5" x 9.25", 8" x 10", 8" x 10.88", 8.5" x 9", 8.5" x 11"

JACKETED COVERS: Where available, Jacketed Covers can be set-up with either Case Laminate or Digital Cloth™ Covers.

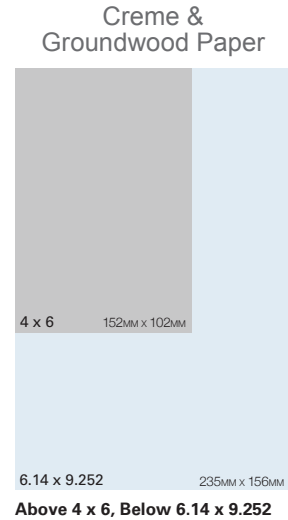
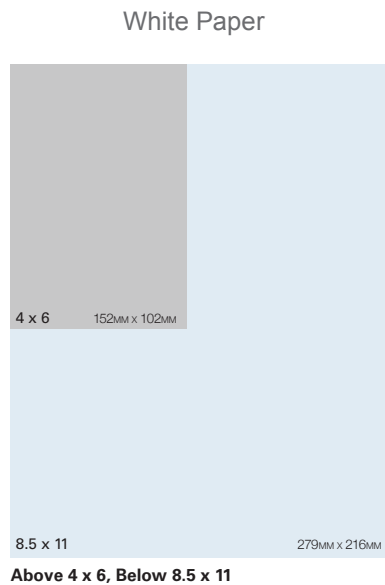
CUSTOM TRIM SIZES

Custom trim sizes are available for Perfect Bound, Case Laminate and Dust Jacket books with size restrictions on the finished book shown below.

Perfect Bound

White Paper*	Crème & Groundwood Paper*
Widths available from: 4" to 8.5" or 102mm to 216mm Lengths available from: 6" to 11" or 152mm to 279mm	Widths available from: 4" to 6.14" or 102mm to 156mm Lengths available from: 6" to 9.252" or 152mm to 235mm

*See the diagram below for the available custom trim sizes. The finished book must fit within these size ranges.

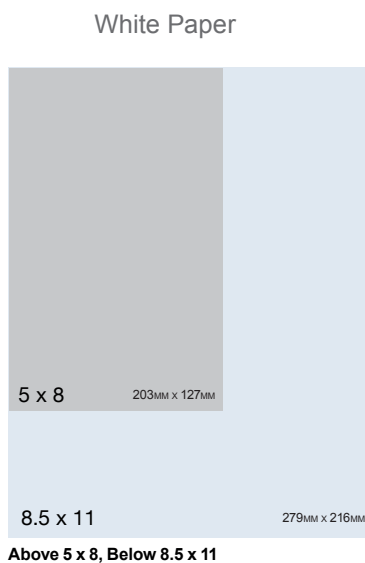


Case Laminate & Dust Jacket

White Paper*	Crème & Groundwood Paper*
Widths available from: 5" to 8.5" or 127mm to 216mm Lengths available from: 8" to 11" or 203mm to 279mm	Widths available from: 5" to 6.14" or 127mm to 156mm Lengths available from: 8" to 9.252" or 203mm to 235mm

*See the diagram below for the available custom trim sizes. The finished book must fit within these size ranges.

*Note that the dimensions of a Dust Jacket must not exceed the maximum size of 6.14 x 9.21in.

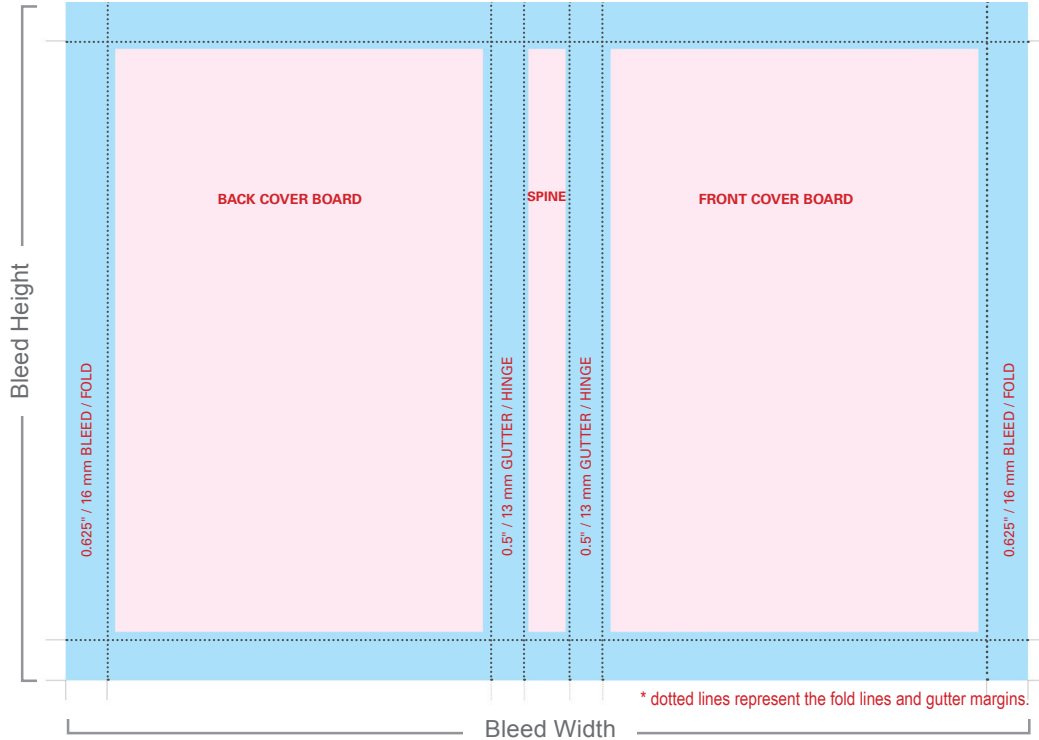


Case Laminate

The board size for a custom case laminate is calculated by subtracting: .185" (5mm) from the trim size width and adding: .25" (6mm) to the trim size height. Board sizes will be used in the formulas below to ensure that the cover file is set-up to the correct full bleed size.

$$\text{Bleed Width} = .625" (16\text{mm}) + \text{Board Width} + .5" (13\text{mm}) + \text{Spine} + .5" (13\text{mm}) + \text{Board Width} + .625" (16\text{mm})$$

$$\text{Bleed Height} = .625" (16\text{mm}) + \text{Board Height} + .625" (16\text{mm})$$



Dust Jacket

The front and back cover size for a custom dust jacket is calculated by adding: .4375" (5mm) to the trim size width and adding: .25" (6mm) to the trim size height. Cover sizes will be used in the formulas below to ensure that the cover file is set-up to the correct full bleed size.

$$\text{Bleed Width} = .125" (3\text{mm}) + .325" (83\text{mm}) + .25" (6\text{mm}) + \text{Cover Width} + \text{Spine} + \text{Cover Width} + .25" (6\text{mm}) + .325" (83\text{mm}) + .125" (3\text{mm})$$

$$\text{Bleed Height} = .125" (3\text{mm}) + \text{Board Height} + .125" (3\text{mm})$$

