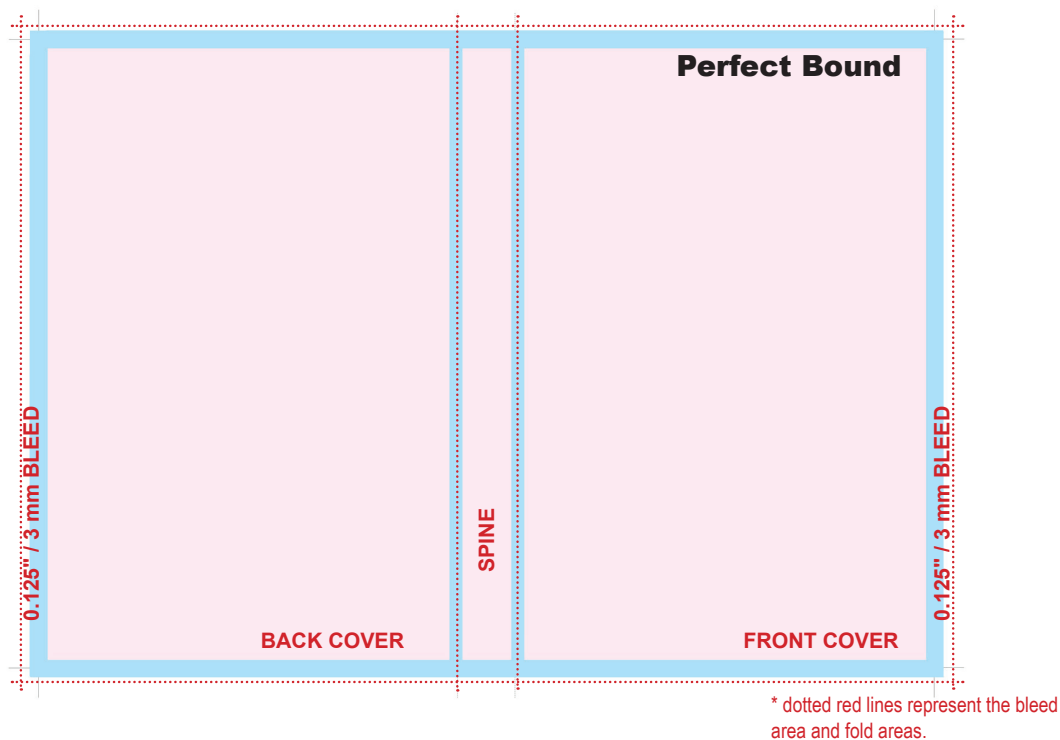


## Perfect Bound

When creating a cover, **Lightning Source strongly recommends downloading a template from our cover template generator**. This should simplify the process and decrease potential issues. We do realize this is not always possible so we are offering the below calculations for creating your cover to bleed size.

Before building your cover please calculate the correct spine width for your book. [This information is available on the Lightning Source website](#).



### To calculate overall bleed width of a Perfect Bound cover:

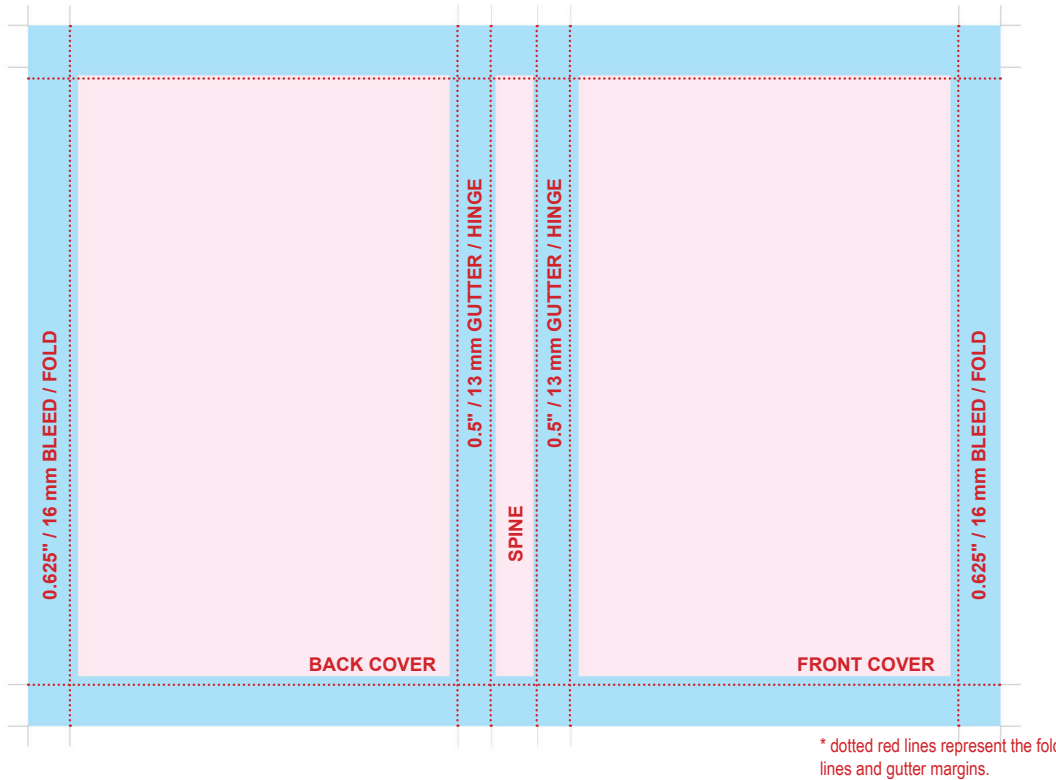
0.125" (3 mm) bleed + back cover width + spine + front cover width + 0.125" (3 mm) bleed

### To calculate overall bleed height of Perfect Bound cover:

0.125" (3 mm) bleed at top + cover height + 0.125" (3 mm) bleed at bottom

EXAMPLE: A 6x9" (229x152 mm) **Perfect Bound** with a 0.35" (9 mm) spine would have a bleed size of 12.6x9.25" (235x320 mm)

## Casebound



To determine the width and height of your **Casebound cover**, use the formula below.

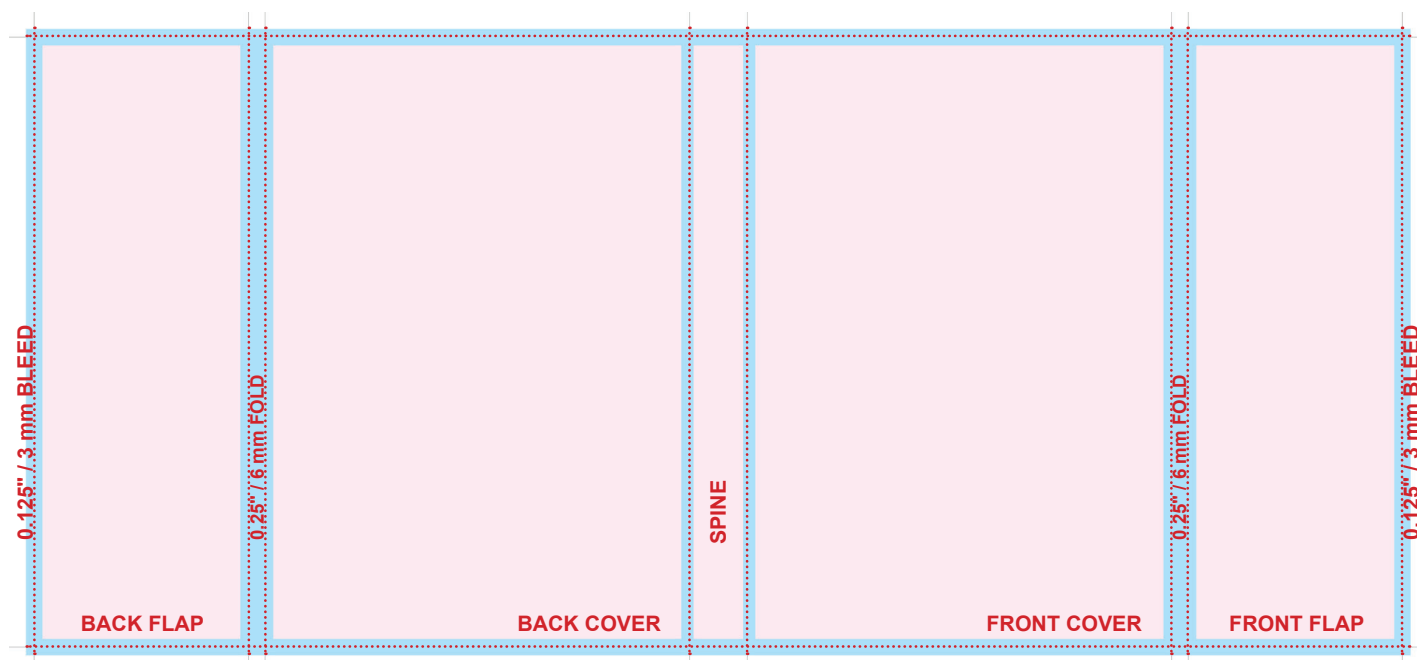
**Bleed width** = .625" (16 mm) + Board Width\* + .500" (13mm) + spine + .500" (13 mm) + Board Width\* + .625" (16 mm)

**Bleed height** = .625" (16 mm) + Board Height\*\* + .625" (16 mm)

Trim Size	*Board Width	**Board Height
5 x 8" (203 x 127 mm)	4.829" (123 mm)	8.25" (210 mm)
5.5 x 8.5" (216 x 140 mm)	5.329" (135 mm)	8.75" (222 mm)
5.83 x 8.27" (210 x 148 mm)	5.642" (143 mm)	8.582" (218 mm)
6 x 9" (229 x 152 mm)	5.818" (148 mm)	9.25" (235 mm)
6.14 x 9.21" (234 x 156 mm)	5.954" (151 mm)	9.46" (240 mm)
6.69 x 9.61" (244 x 170 mm)	6.508" (165 mm)	9.86" (250 mm)
7 x 10" (254 x 178 mm)	6.818" (173 mm)	10.25" (260 mm)
7.5 x 9.25" (235 x 191 mm)	7.318" (186 mm)	9.5" (241 mm)
8 x 8" (203 x 203 mm)	7.818" (199 mm)	8.25" (210 mm)
8 x 10" (254 x 203 mm)	7.818" (199 mm)	10.25" (260 mm)
8 x 10.88" (276 x 203 mm)	7.818" (199 mm)	11.19" (284 mm)
8.25 x 10.75" (273 x 210 mm)	8.063" (205 mm)	11.06" (281 mm)
8.5 x 8.5" (216 x 216 mm)	8.318" (211 mm)	8.75" (222 mm)
8.5 x 11" (279 x 216 mm)	8.318" (211 mm)	11.25" (286 mm)
11 x 8.5" (216 x 279 mm)	10.813" (275 mm)	8.813" (224 mm)

Please be aware that the formula **INCLUDES 0.625" (16 mm) bleed / wrap** on each side of the cover and a **0.5" (13 mm) gutter / hinge** on each side of the spine. The total height **INCLUDES 0.625" (16 mm) bleed / wrap** on the top and bottom.

## Dust Jacket



\* dotted red lines represent the bleed area and fold areas.

Dust Jacket covers are the most complicated covers to layout without a template. Because of this, Lightning Source strongly recommends using a template to ensure that the final layout is correct.

To determine the width and height of your **Dust Jacket cover**, use the formula below.

### Bleed width =

.125" (3 mm) + 3.25" (83 mm) + .25" (6 mm) + Cover Width\* + spine + Cover Width\* + 3.25" (83 mm) + .25" (6 mm) + .125" (3 mm)

**Bleed height =** .125" (3 mm) + Cover Height\*\* + .125" (3 mm)

Trim Size	*Cover Width	**Cover Height
5 x 8" (203 x 127 mm)	5.4375" (138 mm)	8.25" (210 mm)
5.5 x 8.5" (216 x 140 mm)	5.9375" (151 mm)	8.75" (222 mm)
6 x 9" (229 x 152 mm)	6.4375" (164 mm)	9.25" (235 mm)
6.14 x 9.21" (234 x 156 mm)	6.5775" (167 mm)	9.46" (240 mm)

Please be aware that the total width **INCLUDES** 0.125" (3 mm) bleed on each edge of cover, 3.25" (83 mm) flaps, and a 0.25" (6 mm) fold between the front/back cover and flaps. The total height **INCLUDES** 0.125" (3 mm) bleed on the top and bottom.

Please refer to the Lightning Source **File Creation Guide** for Minimum / Maximum page count.